

# ***ENVIRONMENTAL IMPACT ASSESSMENT(EIA)***

By:Engr .Gul-E-Hina

# Environmental Impact Assessment (EIA)

## Definition :

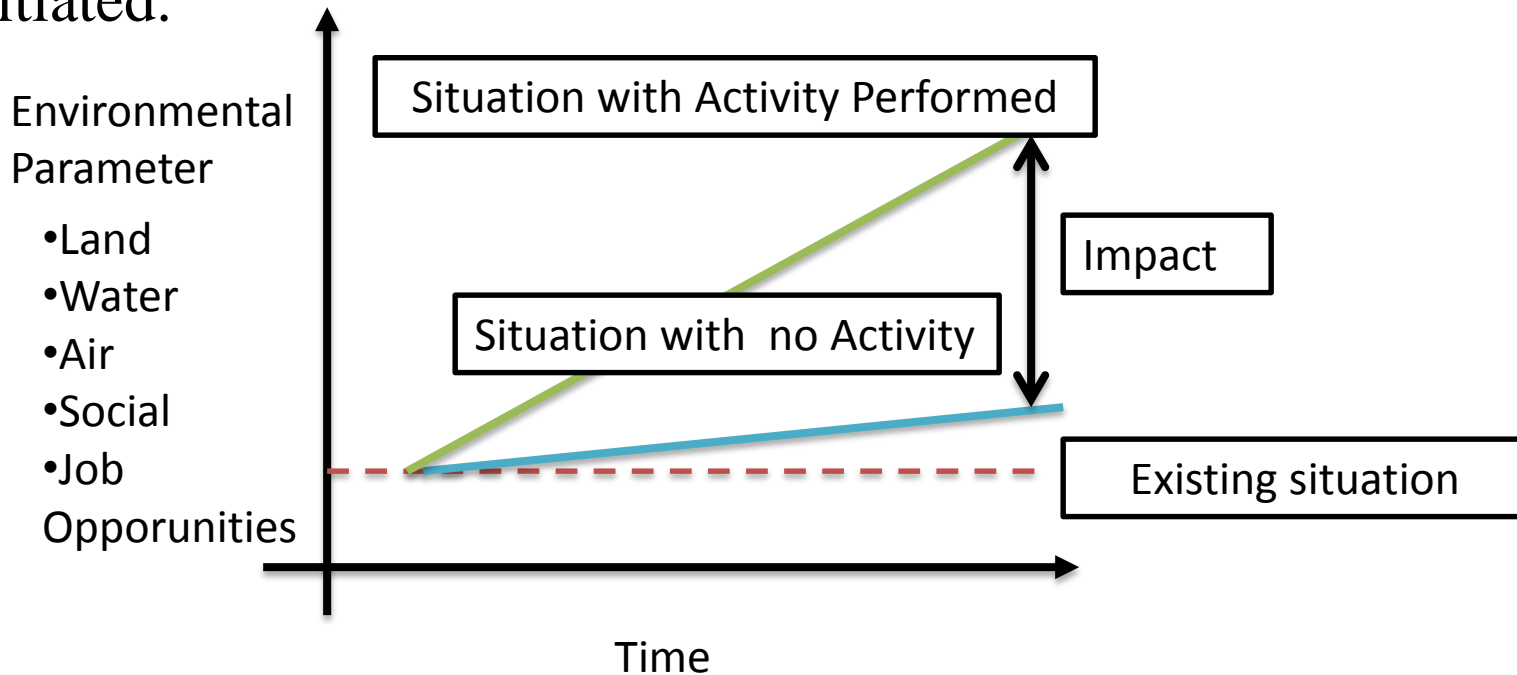
- It is the assessment of all potential environmental, social and health effects that would result on account of location, construction, design and operation of the proposed development is termed as EIA.
- The results of assessment are assembled in a document which termed as *Environmental Impact Statement* (EIS).

# Environmental Impact Assessment (EIA)

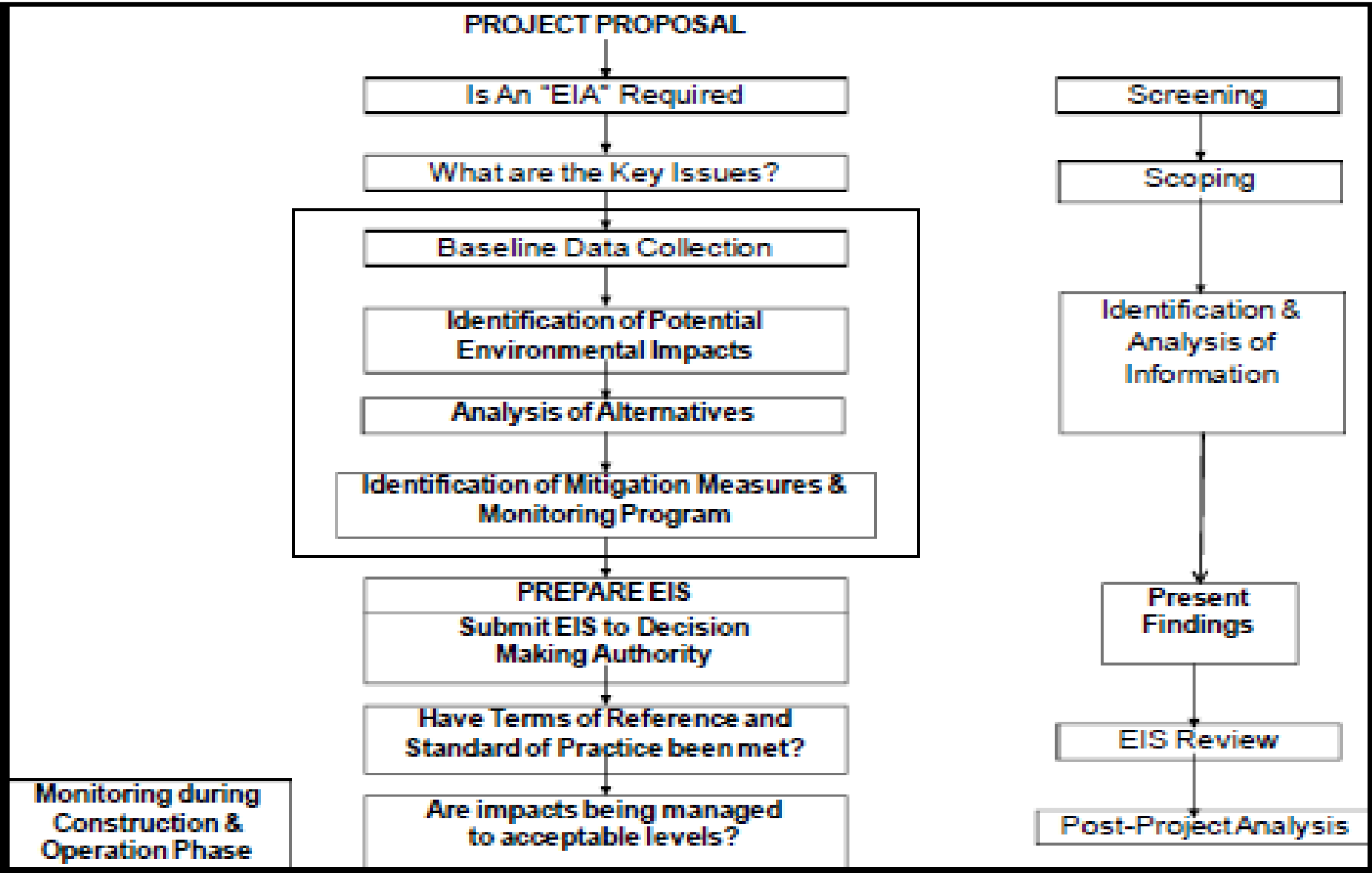
- Initial environmental examination (IEE) is a preliminary attempt to evaluate environmental impacts in order to determine whether a full scale environmental impact assessment is needed. It is also called initial environmental investigation (IEI).

# Environmental Impact :

The change in environmental parameter, over a specified period and within a defined area, resulting from a particular activity compared with the situation which would have occurred had the activity not been initiated.



# General EIA Procedure:



# Steps for EIA study

## 1. Screening

- Screening is the process of deciding on whether an IEE/EIA is required.

## 2. Scoping

- Undertaken to identify key issues to be included in EIA.
- It includes consultation with relevant agencies, stakeholder, local representatives and experts.

# Steps for EIA study

## 3. Baseline studies

- It includes the collection of information on the characteristics of the existing environment (physical, biological) and socio-economic conditions in the study area.
- The baseline studies also, include the detailed description of the proposed project activities and assess various pollutants that would be resulting from the activity.

# Steps for EIA study

## 4. Identification of significant environmental impacts

- Significant environmental impacts are identified on the basis of their magnitude and significance.
- The steps include:
  1. Impact prediction, and
  2. Impact evaluation

## 5. Analysis of Alternatives

- Different alternatives of the project are analyzed on both economic and environmental basis.



# Steps for EIA study

## 6. Mitigation Measures

- Propose appropriate mitigation measures.

## 7. Environmental Monitoring / Management Plan

- EMP provides a framework for mitigating environmental impacts for the life of project.
- It also make provision for auditing the effectiveness of proposed environmental protection measures and procedures.